

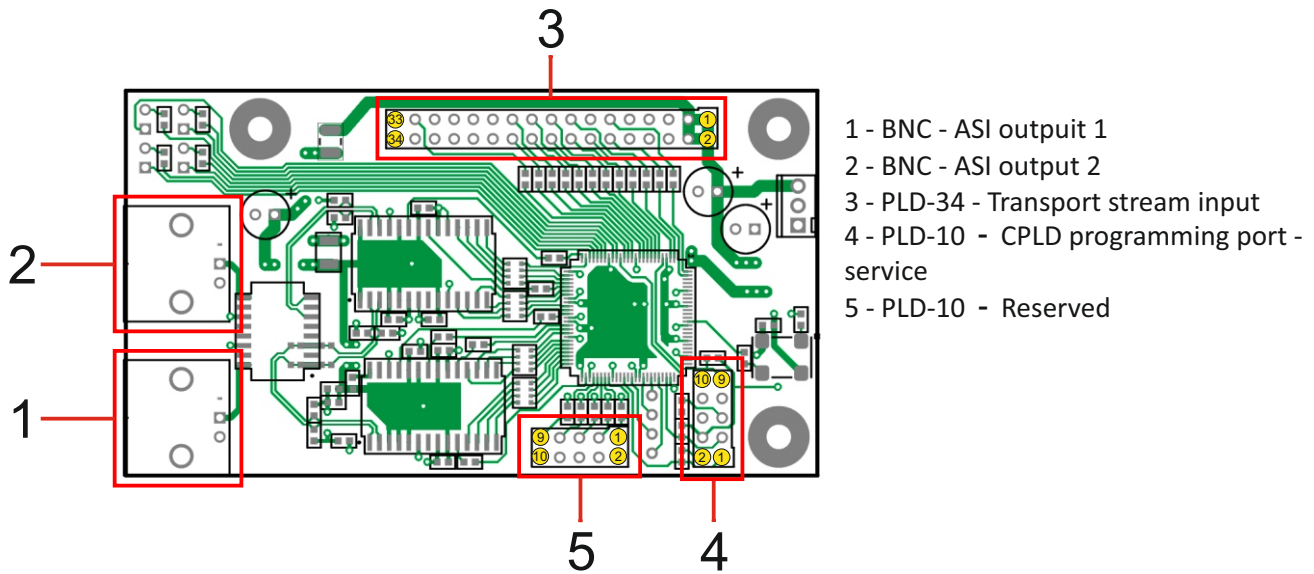
# ASI-output module

The module is designed to convert a parallel DVB-transport stream into an ASI signal and can be used to build various digital broadcasting equipment. The DVB-S / -S2 / -C / -T- / -T2 receivers, MPEG encoders, IP-to-DVB TS gateways, compatible with this module according to the input stream format, can be used as the source of the input stream. The ASI output mode (batch or byte, 188 or 204 bytes in the packet) repeats the input parallel transport stream mode, the module does not convert the format and speed. The module has two electrically independent outputs, the signals to them are completely identical.

## Main technical characteristics

Type of output signal	DVB ASI, electric
Modes of operation	burst, byte
Number of bytes in the packet	188/204
Determining the type of input stream	automatic
Number of outputs	2
Output connector type	BNC
Output voltage	880 mV
Output impedance	75 Ohm
Input bitrate	up to 216 Mbps
Output bitrate	up to 216 Mbps
Modes of operation	burst, byte
Power supply	+5 VDC +/-5%
Consumed power, no more than	2 W
Module board dimensions	90x50 mm

## Module Connectors



## Pin Assignment

### Connector 3 - Transport stream input

1	+ 5,0 V	2	+ 5,0 V
3	+ 5,0 V	4	+ 5,0 V
5	Not connected	6	Not connected
7	Not connected	8	Not connected
9	GND	10	GND
11	TSCLK	12	PSYNC
13	Не подключен	14	DVAL
15	TSDATA 6	16	TSDATA 7
17	TSDATA 4	18	TSDATA 5
19	TSDATA 2	20	TSDATA 3
21	TSDATA 0	22	TSDATA 1
23	GND	24	GND
25	Not connected	26	Not connected
27	Not connected	28	Not connected
29	GND	30	GND
31	Not connected	32	Not connected
33	Not connected	34	Not connected