

Control Module (IP-to-UART converter).

It is intended for controlling, configuration and monitoring of DVB-S / -S2 receiver modules, DVB-S / DVB-S / DVB-T and DVB-S2 / DVB-S / DVB-T modulators, IP-to-DVB and DVB- to-IP, with RS232 / UART control interface, from a PC via Ethernet interface and TCP / IP protocol using a specialized program. The features of the module and the program allow to combine flexibly the connected devices to logical groups, which facilitates the administration of complex systems.

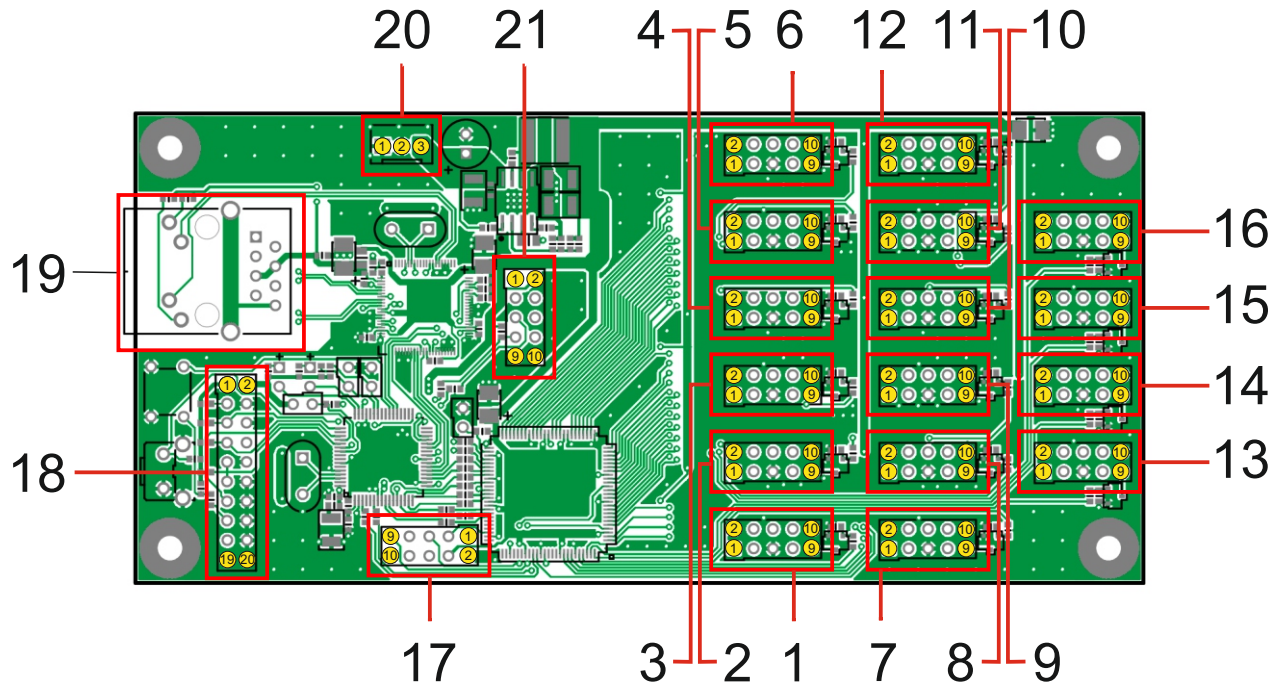
The module can be used to build various digital broadcasting equipment.

The converter's internal software is updated via the Ethernet interface.

Main technical characteristics

Input interface	10/100 Base-T, Full/Half Duplex
Agreement with connected equipment	Auto-negotiation/manually
Input connector type	Rj45
Supported protocol	TCP/IP
Interfaces for control connected modules	RS232/UART
Number of plug-ins	1...16
Supply voltage :	8...18 V
Consumed power, no more than	2 W
Converter board dimensions	130x60 mm

Module Connectors



- 1...16 - Connecting the managed modules (Port 1 ... Port 16)
- 17 - PLD-10 (Programming CPLD - service)
- 18 - PLD-20 (CPU Programming - service)
- 19 - RJ-45 - Ethernet interface for PC communication
- 20 - Power supply module (8 ... 18 VDC, 2 W)
- 21 - PLD-10 (CPU debug port)

Pin Assignment

Connector 1 ... 16 - ports 1 ...16 control modules, RS-232

1	Not connected	2	RxD
3	TxD	4	Con. with 6
5	GND	6	Con. with 4
7	Con. with 8	8	Con. with 7
9	Reset ext. device	10	GND

Connector 20 - module power supply

1	GND
2	GND
3	8 ... 18 VDC, 2 W